

1. **Underlayment:** High Temp Ice & Water
2. **Substrate:** Plywood substrate material shown. 1.75" can be installed over open framing with a max span width of 48".

Roof Coverage	14", 16" & 18"
Wall Coverage	14", 16" & 18"
Panel Gauges	22*, 24*
Fastener Options	Concealed Clip
Panel Length	3' to 43' Shop Production 3' to 100' Run Onsite
Rib Heights	1.75"
Roof Slope	1:12 or Greater with Mastic
Impact Rating	UL 2218
Wind Uplift Rating	ASTM E1592
Paint Warranty	Based on Paint System
Weathertight Warranty	Available

* Grade 50

Version 5.1, 4/2021



Vented/Non-Vented Ridge Cap



Hip Ridge



W Valley



Transition -High to Low



Transition - Low to High



Open Prow Gable



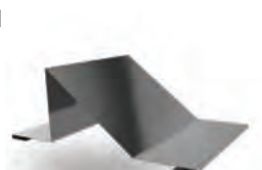
Closed Prow Gable



4" Mini Gable



6" Gable



Snowbreak



4" Eave



6" Eave



Style D Eave - 2" & 4"



4" Mini Top Cap



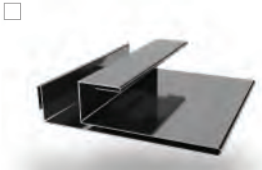
6" Top Cap



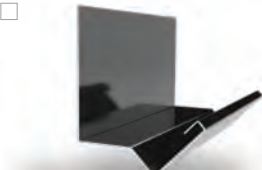
J Trim



Double J Trim*



F & J Trim



Head Trim



Side Wall



End Wall



Outside Corner



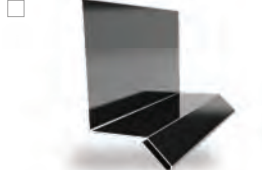
Inside Corner



Door Cap



Double Base Drip*



Base Drip



Broom Base



Wainscot



Fascia

Additional Trim Profiles Available By Request

* Color On Both Sides

